

- Metallic parts meet NACE<sup>†</sup> recommendations
- Miniature high corrosion resistant design
- Adjusting Knob has Snap-Action Lock
- Particularly suitable for marine, petro-chemical, food processing, medical, dental and similar applications
- Panel Mounting facility

<sup>†</sup>National Association of Corrosion Engineers - recognised oil-field recommendation for resistance to sulphide stress cracking common in well-head and other corrosive environments.

### Technical Data

Medium:

Compressed air only

Maximum Inlet Pressure:

17,2 bar

Operating Temperature:

-20°C\* to +66°C

\*Consult our Technical Service for use below +2°C

Filter Element:

5 µm

Recommended Regulated Pressures<sup>††</sup>:

0,2 - 3,5 bar

0,3 - 8,6 bar

<sup>††</sup>Can be adjusted to zero bar outlet pressure and, generally, to pressures in excess of those specified.

Gauge Ports:

1/8 N.P.T.F.

Maximum Flow with 7 bar inlet pressure, 6,3 bar outlet pressure and pressure drop of 1 bar:

4 dm<sup>3</sup>/s

### Materials

Stainless steel bowl and body. Acetal resin adjusting knob/bonnet. Synthetic rubber elastomeric materials. Polypropylene filter element.

### Ordering Information

To order a standard Miniature Filter-Regulator, quote model number from tables overleaf.

For non-standard models please consult our Technical Service.

## Miniature Filter-Regulator 1/4 N.P.T.F.

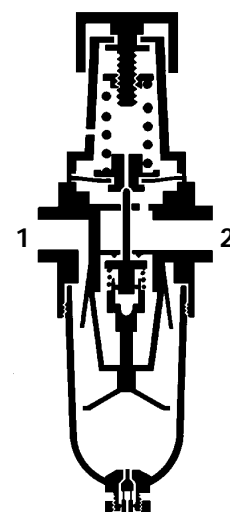
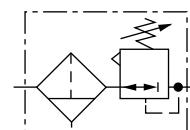


### Port Size

1/4 N.P.T.F.

### Alternative Models

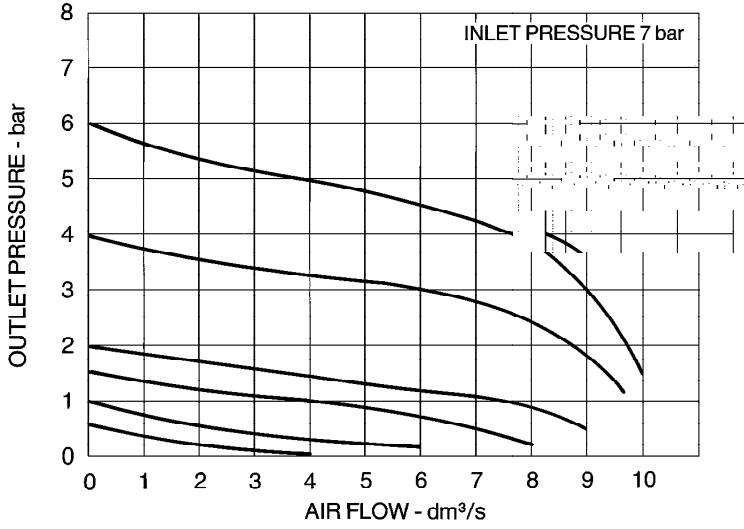
Other port thread forms





### Typical Performance Characteristics

**FLOW CHARACTERISTICS**



### Standard Miniature Filter-Regulators

Manual Drain, 5 µm element, 3,5 bar spring

Port Size	Relieving	Weight kg	Non-relieving	Weight kg
¼ N.P.T.F.	B05-233-M1EA	0,42	B05-235-M1EA	0,42

Manual Drain, 5 µm element, 8,6 bar spring

Port Size	Relieving	Weight kg	Non-relieving	Weight kg
¼ N.P.T.F.	B05-233-M1LA	0,42	B05-235-M1LA	0,42

### Non-standard Models

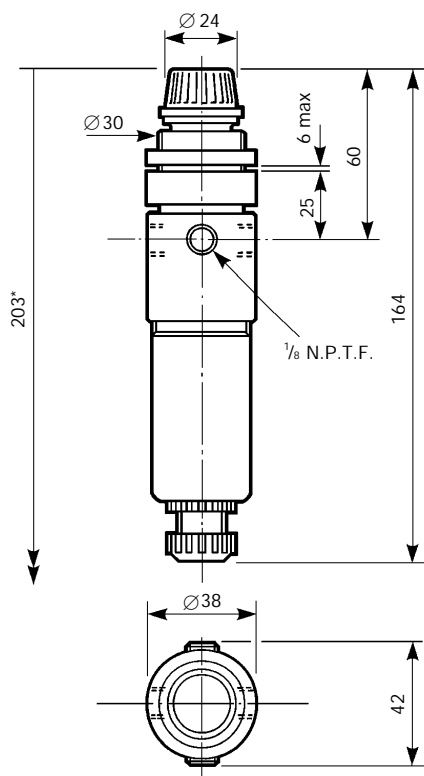
For other options, please consult our Technical Service.

### Accessories

Panel Mounting Nut, reference 2962-89.

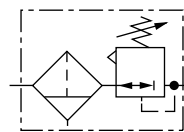


## Miniature Filter - Regulator



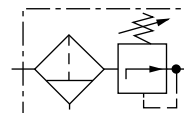
### 3,5 bar spring Manual Drain

Relieving  
B05-233-M1EA 1/4 N.P.T.F.



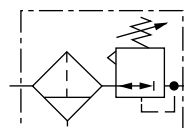
### Non-relieving

B05-235-M1EA 1/4 N.P.T.F.



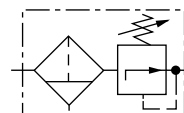
### 8,6 bar spring Manual Drain

Relieving  
B05-233-M1LA 1/4 N.P.T.F.



### Non-relieving

B05-235-M1LA 1/4 N.P.T.F.



\*Minimum clearance required to remove bowl from body.

**Note:** Panel Mounting Nut not included.  
Order separately as shown in Accessories.

## Spares Kits

Type	Repair Kit
Relieving	3820-08
Non-relieving	3820-09

Repair Kit for Drain available, reference 684-51.

## Warning

These products are intended for use in industrial compressed air systems only. Do not use these products where *pressures* and *temperatures* can exceed those listed under 'Technical Data'.

Before using these products with fluids other than those specified, for non-industrial applications, life-support systems, or other applications not within published specifications, consult NORGREN MARTONAIR.

Through misuse, age, or malfunction, components used in fluid power systems can fail in various modes. The system designer is warned to consider the failure modes of all component parts used in fluid power systems and to provide adequate safeguards to prevent personal injury or damage to equipment in the event of such failure.

**System designers must provide a warning to end users in the system instructional manual if protection against a failure mode cannot be adequately provided.**

System designers and end users are cautioned to review specific warnings found in instruction sheets packed and shipped with these products.