

- Resistant to aggressive environment
- Suitable for food applications
- Very compact
- Easy tube insertion and removal
- Compatible with range of tubing
- Full bore, no flow restrictions



Technical Data

Medium:

Compressed air or water

Operating Pressure:

Vacuum – 18 bar

Vacuum: = –750mm of Hg i.e. 98%

Operating Temperature:

Air: –20°C to +110°C

Water: 0°C to +110°C

Tube Sizes

4, 6, 8, 10 and 12 mm O/D

Tubing Types:

Nylon 11 or 12, Polyurethane and PTFE

Materials

Stainless steel 316 for body

Stainless steel 316 for grab ring

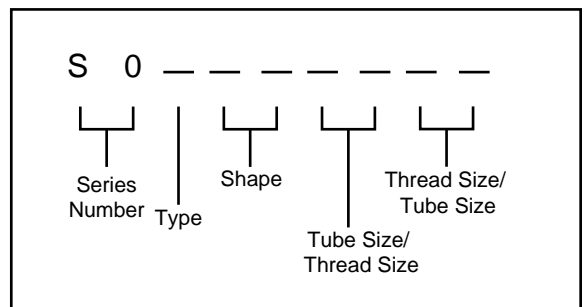
Acetal for release sleeve

Viton 'O' Ring

Ordering Information

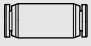


To order, quote appropriate product number from the tables on the following pages.

Product numbering system is designed to make identification and selection simple:





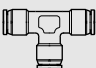
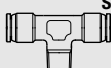
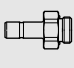
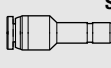
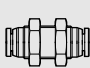
Straight Connectors and Adaptors

STRAIGHT CONNECTOR tube to tube S0020  Page 0.0.000.03	STRAIGHT ADAPTOR BSP taper S0125  Page 0.0.000.03	STRAIGHT ADAPTOR BSP taper S0225  Page 0.0.000.03				

Elbow Connectors, Adaptors and Banjos

ELBOW CONNECTOR tube to tube S0040  Page 0.0.000.03	ELBOW ADAPTOR BSP taper S0145  Page 0.0.000.03					

Tee Connectors, Adaptors and Banjos, 'Y' Connectors and Adaptors, 4-way Connectors

TEE CONNECTOR tube x 3 S0060  Page 0.0.000.04	TEE ADAPTOR BSP taper S0165  Page 0.0.000.04	STRAIGHT STEM ADAPTOR S0215  Page 0.0.000.04	UNEQUAL STEM S0023  Page 0.0.000.04	BULKHEAD CONNECTOR O/D tube to O/D tube S0029  Page 0.0.000.04		

Banjo Bodies and Bolts

--	--	--	--	--	--	--

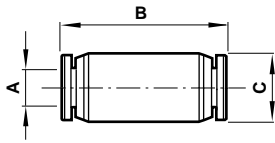
Accessories, Manifolds

--	--	--	--	--	--	--



Straight Connector

O/D tube to O/D tube

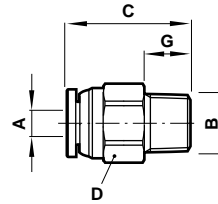


S0020

Product number	A O/D tube	B	C
S00200400	4	26,0	10,0
S00200600	6	28,0	12,0
S00200800	8	33,0	15,0
S00201000	10	35,6	18,0
S00201200	12	40,8	20,0

Straight Adaptor

O/D tube to male taper BSP thread

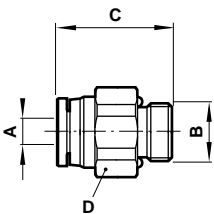


S0125

Product number	A O/D tube	B thread	C	D A/F	G A/F
S01250418	4	1/8	20,5	10,0	8,0
S01250618	6	1/8	21,3	12,0	8,0
S01250628	6	1/4	23,3	14,0	10,0
S01250818	8	1/8	24,0	15,0	10,0
S01250828	8	1/4	25,8	15,0	10,0
S01251028	10	1/4	27,8	19,0	10,0
S01251038	10	3/8	29,0	19,0	11,0
S01251228	12	1/4	31,0	22,0	10,0
S01251238	12	3/8	31,5	22,0	10,0

Straight Adaptor

O/D tube to male BSP thread

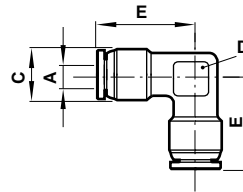


S0225

Product number	A O/D tube	B thread	C	D A/F
S02250418	4	1/8	18,1	14,0
S02250618	6	1/8	19,0	14,0
S02250628	6	1/4	19,8	17,0
S02250818	8	1/8	24,5	15,0
S02250828	8	1/4	22,0	17,0
S02251028	10	1/4	25,3	19,0
S02251038	10	3/8	23,3	22,0
S02251228	12	1/4	27,4	22,0
S02251238	12	3/8	28,0	22,0

Elbow Connector

O/D tube to O/D tube

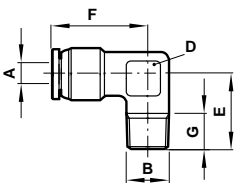


S0040

Product number	A O/D tube	C	D A/F	E
S00400400	4	10,9	12,0	21,5
S00400600	6	11,9	12,0	22,1
S00400800	8	15,0	12,0	25,2
S00401000	10	17,4	14,0	25,5
S00401200	12	20,0	17,0	28,5

Fixed Elbow Adaptor

O/D tube to male taper BSP thread

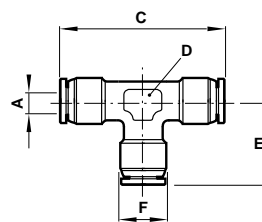


S0145

Product number	A O/D tube	B thread BSP	D A/F	E	F	G
S01450418	4	1/8	12,0	19,0	21,5	8,0
S01450618	6	1/8	12,0	19,0	22,1	8,0
S01450628	6	1/4	12,0	20,5	22,1	10,0
S01450818	8	1/8	12,0	21,5	25,2	8,0
S01450828	8	1/4	12,0	21,5	25,2	10,0
S01451028	10	1/4	14,0	23,5	25,5	10,0
S01451228	12	1/4	17,0	23,0	28,5	10,0
S01451238	12	3/8	17,0	25,0	28,5	11,0

Tee Connector

O/D tube to O/D tube



S0060

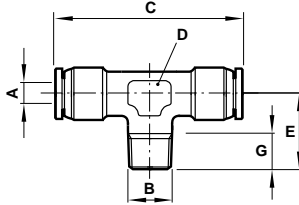
Product number	A O/D tube	C	D A/F	E	F
S00600400	4	43,0	12,0	21,5	10,9
S00600600	6	44,2	12,0	22,1	11,9
S00600800	8	50,4	12,0	25,2	15,0
S00601000	10	51,0	14,0	25,5	17,4
S00601200	12	57,0	17,0	28,5	20,0



Fixed Tee Adaptor

O/D tube to male taper BSP thread

S0165

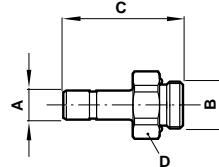


Product number	A O/D tube	B thread BSP	C	D	E	G
S01650418	4	1/8	43,0	12,0	19,0	8,0
S01650618	6	1/8	44,2	12,0	19,0	8,0
S01650628	6	1/4	45,0	12,0	20,5	10,0
S01650818	8	1/8	50,4	12,0	21,5	8,0
S01650828	8	1/4	50,4	12,0	21,5	10,0
S01651028	10	1/4	55,0	14,0	23,5	10,0
S01651228	12	1/4	57,0	17,0	23,0	10,0
S01651238	12	3/8	57,0	17,0	25,0	11,0

Straight Stem Adaptor

O/D tube stem to male BSP thread

S0215

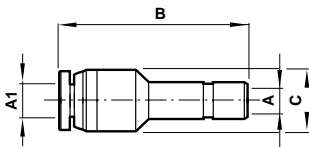


Product number	A O/D tube	B thread BSP	C	D A/F
S02150418	4	1/8	25,5	14,0
S02150618	6	1/8	27,0	14,0
S02150828	8	1/4	31,0	17,0
S02151028	10	1/4	34,0	17,0
S02151238	12	3/8	36,5	22,0
S02151248	12	1/2	41,5	27,0

Unequal Stem

O/D tube stem to O/D tube

S0023

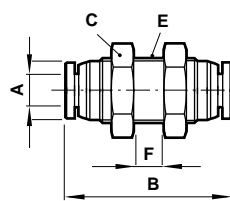


Product number	A1 O/D stem	A O/D tube	B	C
S00230604	6	4	29,2	10
S00230804	8	4	32,2	10
S00230806	8	6	33,1	12
S00231006	10	6	35,9	12
S00231008	10	8	38,3	15
S00231206	12	6	36,3	12
S00231208	12	8	40,3	15
S00231210	12	10	45,0	18

Bulkhead Connector

O/D tube to O/D tube

S0029



Product number	A O/D tube	B	C A/F	E	F
S00290400	4	28,7	14,0	M11	0-6
S00290500	5	29,2	15,0	M12	0-6
S00290600	6	31,6	16,0	M13	0-8
S00290800	8	36,5	19,0	M16	0-8
S00291000	10	41,6	22,0	M19	0-11
S00291200	12	48,0	26,0	M22	0-15

Warning

These products are intended for use in industrial compressed air systems only. Do not use these products where pressures and temperatures can exceed those listed under 'Technical Data'.

Before using these products with fluids other than those specified, for non-industrial applications, life-support systems, or other applications not within published specifications, consult Norgren.

Through misuse, age, or malfunction, components used in fluid power systems can fail in various modes. The system designer is warned to consider the failure modes of all component parts used in fluid power systems and to provide adequate safeguards to prevent personal injury or damage to equipment in the event of such failure.

System designers must provide a warning to end users in the system instructional manual if protection against a failure mode cannot be adequately provided.

System designers and end users are cautioned to review specific warnings found in instruction sheets packed and shipped with these products where applicable.