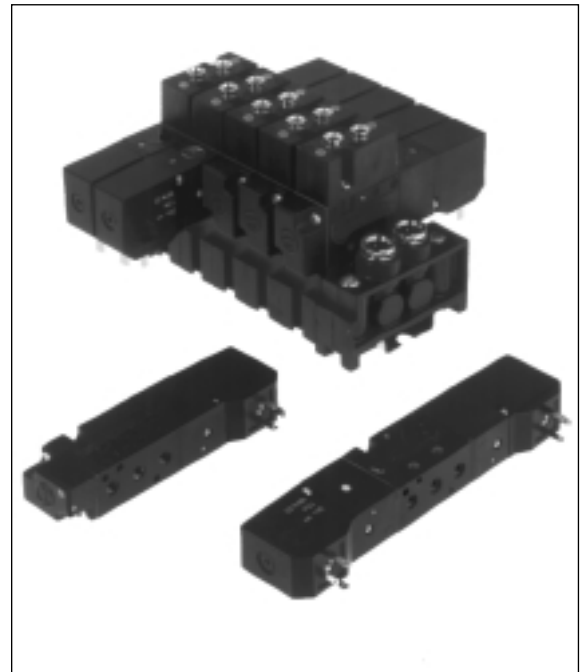


**Integrally Ported 5/2 and 5/3 Spool Valves  
Solenoid Actuated and Pilot Operated  
Ø 4, Ø 6mm or M5**

- High flow from 17 mm body width
- Low power solenoids with a range of voltages
- Use valves singly or with Base Systems
- Low profile fixed length manifolds
- Modular manifolds can be DIN rail or surface mounted


**Technical Data**
**Medium:**

Compressed air, filtered to 40µm lubricated and non-lubricated

**Operation:**

Spool valve, indirectly actuated

**Mounting:**

Through-holes in valve body or to 35 mm DIN rail using modular base system

**Port Sizes:**

M5, Ø 4 mm and Ø 6 mm (with connector blocks)

**Operating Pressure:**

Maximum 10 bar

See individual details overleaf

**Flow Characteristics:**

Size	Function	'C'	'b'	'A'	l/min	Cv	Kv
M5	5/2	1	0,55	4,23	256	0,26	0,22
Ø 4mm	5/2	0,9	0,54	3,74	226	0,23	0,2
Ø 6mm	5/2	1,4	0,42	5,7	344	0,35	0,3
M5	5/3 APB	1,22	0,32	4,89	296	0,3	0,26

**Ambient Temperature:**

-20°C to +80°C Pilot Models

-20°C to +50°C Solenoid Models

\*Consult our Technical Service for use below +2°C

**Materials**

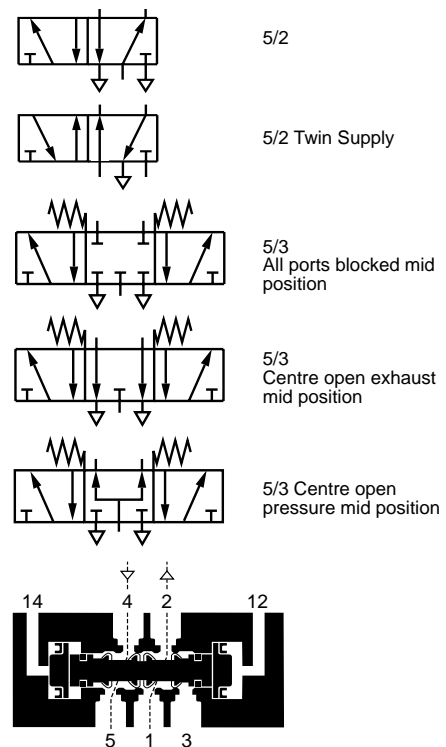
Zinc alloy body, glass filled end caps, aluminium spool with bonded nitrile rubber seals, and glass filled co-polymer bases.

**Ordering Information**

To order, quote model number and voltage code from tables overleaf, e.g. V085516A–B213A for a Solenoid Pilot Actuated, Spring and Air Return model fitted with a 24 V d.c. coil and screwdriver operated manual override.

**Multipole Systems**

For complete Valve Islands see section 5.4.112





**General Information**  
**5/2 Solenoid Actuated Valves**

Symbol	Model	Manual Override	Solenoid Pilot	Operator	Return	Operating Pressure (bar)	Pilot Pressure (bar)	Weight (kg)	Spares kit
	V085516A-B21*A	Screwdriver Bi-stable	Internal	Solenoid	Spring and Air	3 - 10	-	0,155	V10034-K00
	V085516A-B31*A	Push Only							
	V085511A-B21*A	Screwdriver Bi-stable	Internal	Solenoid	Solenoid	2 - 10	-	0,198	V10034-K00
	V085511A-B31*A	Push Only							

\*Insert voltage code from table below.

**5/3 Solenoid Actuated Valves**

Symbol	Model	Manual Override	Pilot Supply	Operator	Mid Position	Return	Operating Pressure (bar)	Pilot Pressure (bar)	Weight (kg)	Spares kit
	V085611A-B21*A	Screwdriver Bi-stable	Internal	Solenoid	APB	Solenoid	-0,9 - 10	-	0,158	V10034-K01
	V085611A-B31*A	Push Button								
	V085711A-B21*A	Screwdriver Bi-stable	Internal	Solenoid	COE	Solenoid	-0,9 - 10	-	0,158	V10034-K02
	V085711A-B31*A	Push Button								
	V085811A-B21*A	Screwdriver Bi-stable	Internal	Solenoid	COP	Solenoid	-0,9 - 10	-	0,158	V10034-K03
	V085811A-B31*A	Push Button								

\*Insert voltage code from table below.

**Pilot Actuated Valves**

Symbol	Model	Manual Override	Operator	Mid-Position	Return	Operating Pressure (bar)	Pilot Pressure (bar)	Weight (kg)	Spares kit
	V085536A-X0130	-	Pressure	-	Spring and Air	2 - 10	1,5 + 0,5 x supply	0,152	V10034-K00
	V085533A-X0020	-	Pressure	-	Pressure	1 - 10	2 - 10	0,141	V10034-K00
	V085633A-X0020	-	Pressure	APB	Spring and Air	1 - 10	Minimum 2 bar	0,119	V10034-K01
	V085733A-X0020	-	Pressure	COE	Spring and Air	1 - 10	Minimum 2 bar	0,119	V10034-K02
	V085833A-X0020	-	Pressure	COP	Spring and Air	1 - 10	Minimum 2 bar	0,119	V10034-K03
	V085533A-X0060	-	Pilot Priority	-	Pilot	-0,9 - 10	Minimum 2 bar	0,119	V10034-K00

APB = All Ports Blocked, COE = Centre Open Exhaust, COP = Centre Open Pressure.

**\*Voltage Codes and Spare Coils**

Voltage	Codes	Power Inrush/Hold	Coil Part Number
6V d.c.	1	1,5 W	V10025-A11
12V d.c.	2	1,7 W	V10025-A12
24V d.c.	3	1,7 W	V10025-A13
12V 50/60Hz	1	4,1/2,9 VA	V10025-A11
24V 50/60Hz	4	4,1/2,9 VA	V10025-A14
48V 50/60Hz	6	4,1/2,9 VA	V10025-A16
110V 50/60Hz	8	3,5/2,5 VA	V10025-A18
240V 50/60Hz	9	3,5/2,5 VA	V10025-A19

**Electrical Details for Solenoid Operators**

Voltage Tolerances:	±10%
Rating:	100% E.D.
Inlet Orifice:	0,8 mm
Electrical Connection:	DIN 43650 table 'C'
Manual Override:	V0855--A-B21*A - Screwdriver Bi-stable V0855--A-B31*A - Push button, spring return
Protection Class:	IP 65 (DIN 40050)

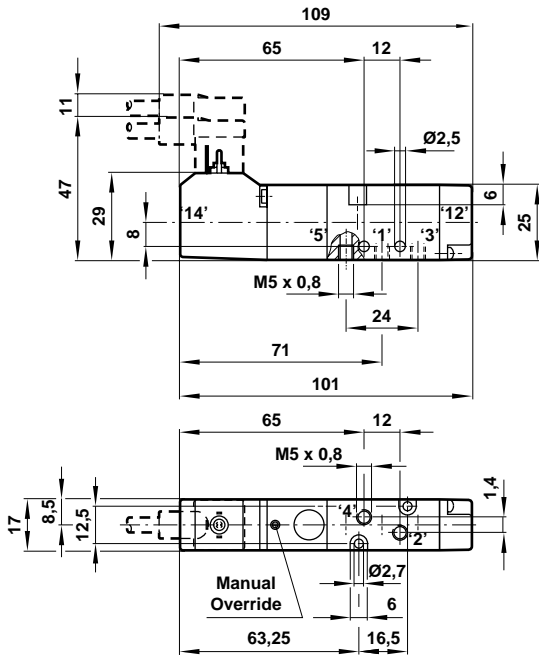
For details of connector plugs and light emitting seals see section 7.7.001.

**Accessories**

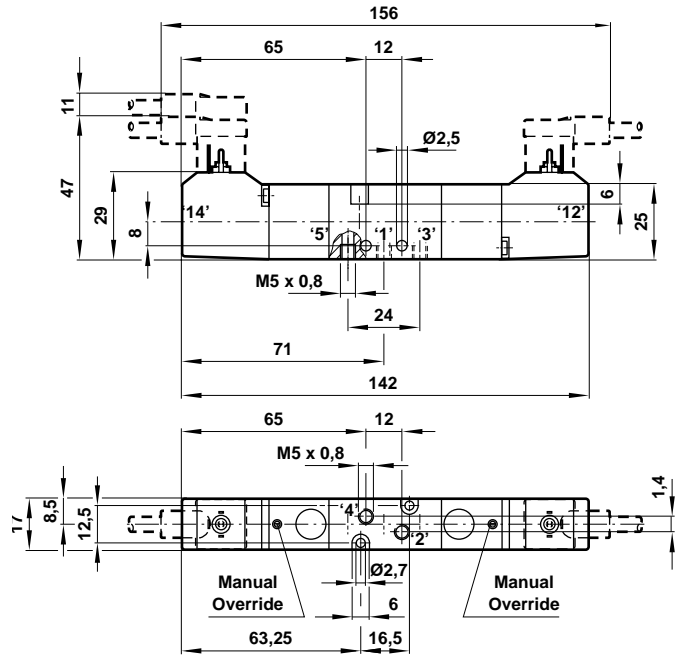
Optional Port Connector Blocks	Blanking Plate	Optional Tie Rod Kits	DIN Rail	Blanking Plug
V085516A-Q0404, Ø4 mm	V095516A-Q1100	V085516A-Q0302-0316	V10009-C00 1 metre	V10511-K01
V085516A-Q0404, Ø6 mm	-	-	-	-



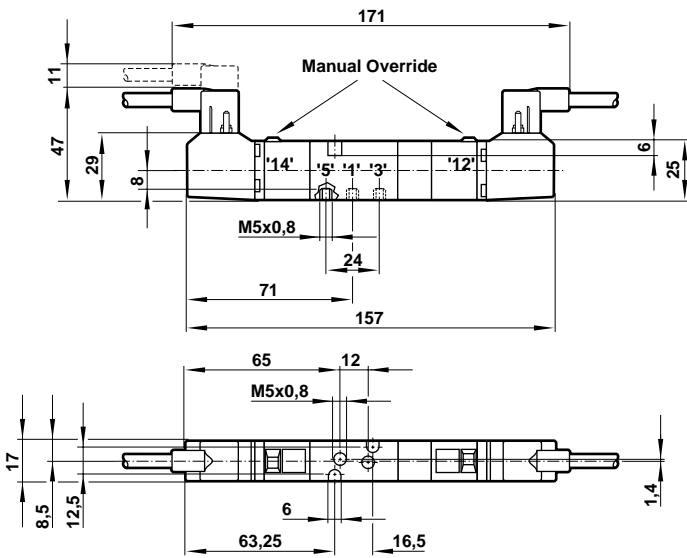
**V085516A Models**  
**5/2 Single Solenoid Valve**



**V085511A Models**  
**5/2 Double Solenoid Valve**

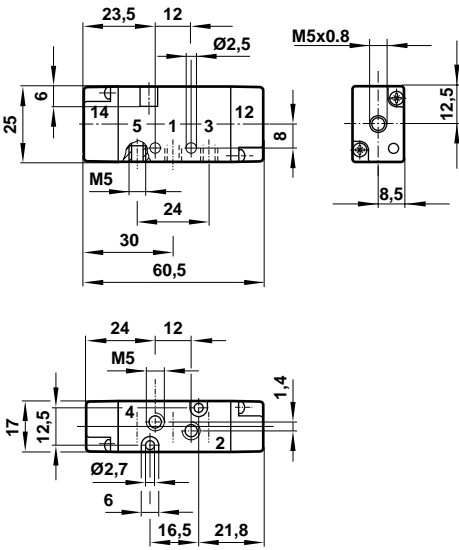


**V085\*11A-B21\*A Model**  
**5/3 Double Solenoid Valve**

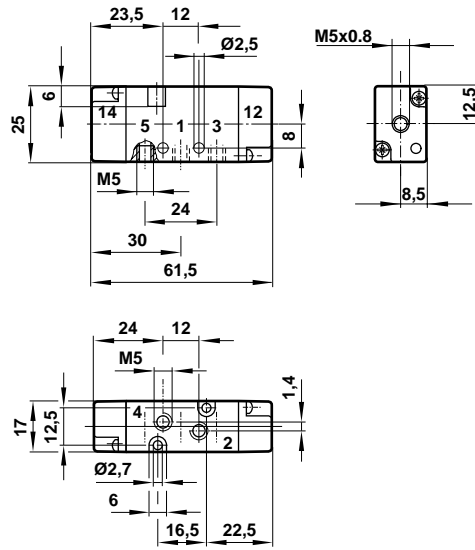




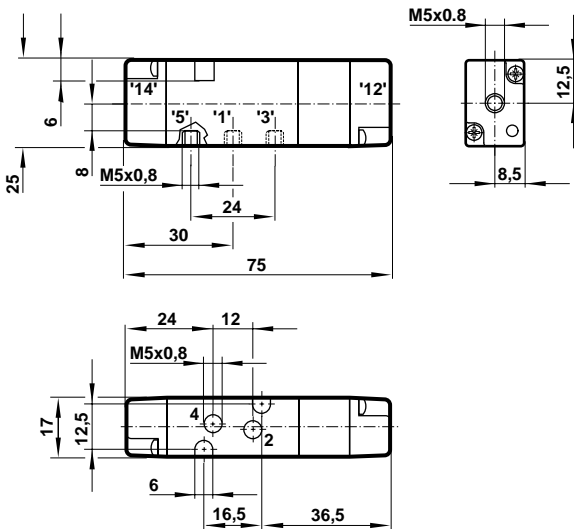
**V085536A-X0130 Model**  
**5/2 Single Pilot Valve**



**V085533A-X0020 and V085533A-X0060**  
**5/2 Double Pilot Valves**

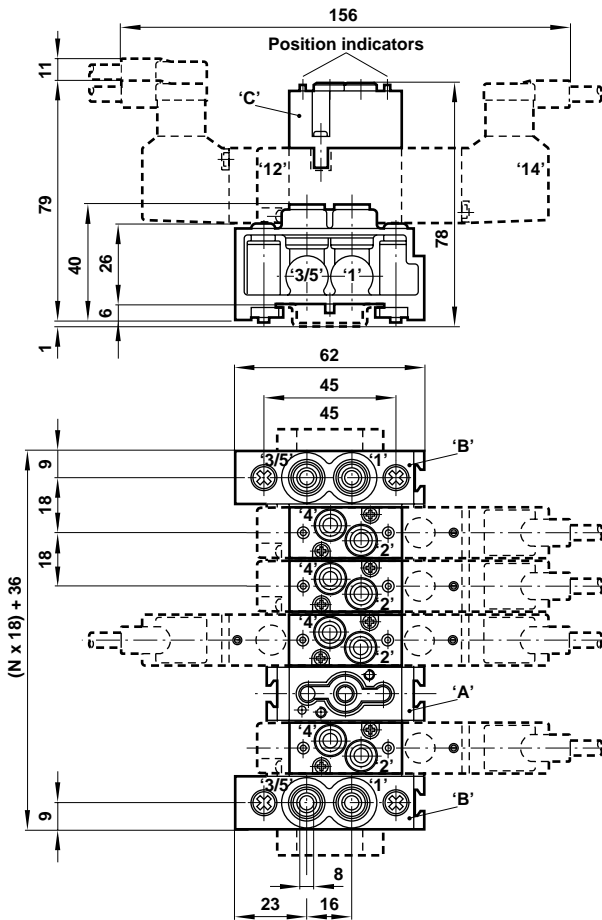


**V085\*33A-X0020 Model**  
**5/3 Double Pilot Valve**





**Modular Manifold for DIN rail or surface mounting**



N = Number of stations

**Manifold Block (A)**

**V085516A-Q01A8** Single Station Manifold Block

**End Plate Kit (B)**

**V085516A-Q02A8**

Consisting of 1 left hand and 1 right hand end cap with push-in connectors and DIN rail mounting system  
Size: Ø 8 mm tube

**Optional Port Connector Blocks (C)**

Push-in port connector block with integral position indicators

**V085516A-Q0404** Size: Ø 4 mm tube

**V085516A-Q0406** Size: Ø 6 mm tube

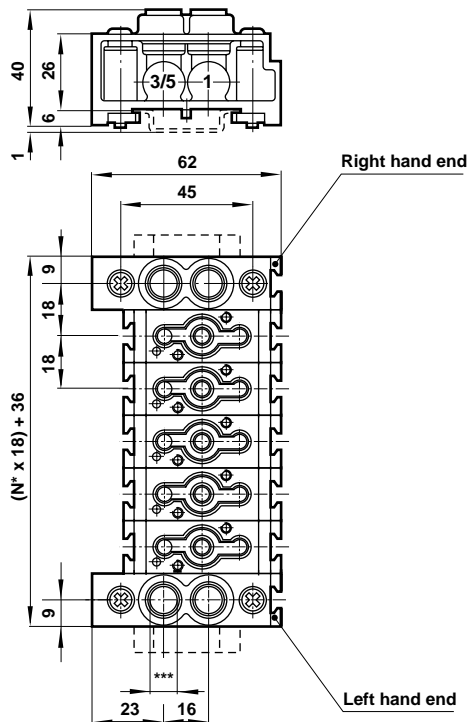
**Tie Rod Kits**

**V085516A-Q03\*\***

\*\* = Number of stations in manifold, 02 to 16.

Pillar screws supplied as standard with Manifold Blocks and End Plate kits. Tie Rod Kits are an optional extra.

**Modular Manifold assemblies for DIN rail or surface mounting**



N = Number of stations

\*\*\* For Ø8 mm tube

**Modular Manifold Assemblies**

**V088AX\*\*-XXXXX**

Manifold assemblies for 2 to 16 stations, \*\* = 02 to 16.  
Size: Ø 8 mm tube

**Dual Pressure Modular Manifold assemblies**

**V088AX\*\*-\*\*XXX**

Manifold assemblies for 2 to 16 stations, allows supply of two different inlet pressures simultaneously

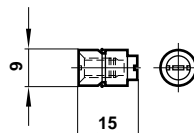
Size: Ø 8 mm tube

\*\* = 1 to 15 to indicate position of Dual Pressure Plug, e.g V088AX03-07XX indicates a 10 station base divided into groups of 3 and 7.

**Dual Pressure Plug**

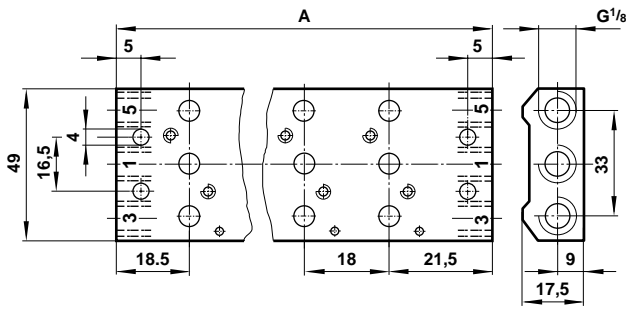
**V085516A-Q05AA**

To be placed in the inlet gallery



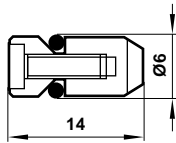


### Fixed Length Manifold



Type	No. of stations	A
V10026 – G02	2	58
V10026 – G04	4	94
V10026 – G06	6	130
V10026 – G08	8	166
V10026 – G10	10	202
V10026 – G12	12	238

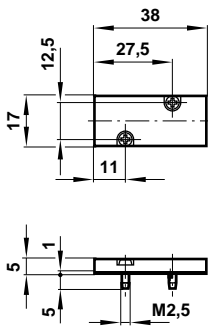
Note: Gaskets and valve fixing screws are supplied with these manifolds.



### Blanking Plugs

#### V10511-K01

For dual pressure supply on Fixed Length Manifold.



### Blanking Plate

#### V095516A-Q1100

Blanking Plate for blocking off unwanted stations.

### Accessories

Connector plugs and light emitting seals see section 7.7.001.

### Warning

These products are intended for use in industrial compressed air systems only. Do not use these products where *pressures* and *temperatures* can exceed those listed under 'Technical Data'.

Before using these products with fluids other than those specified, for non-industrial applications, life-support systems, or other applications not within published specifications, consult NORGREN.

Through misuse, age, or malfunction, components used in fluid power systems can fail in various modes. The system designer is warned to consider the failure modes of all component parts used in fluid power systems and to provide adequate safeguards to prevent personal injury or damage to equipment in the event of such failure.

**System designers must provide a warning to end users in the system instructional manual if protection against a failure mode cannot be adequately provided.**

System designers and end users are cautioned to review specific warnings found in instruction sheets packed and shipped with these products.